

# IR-60

## VN60-IR

### Night View Underwater IR Illuminator

**\*EX-Clear view at total darkness (0 Lux) up to 20M distance**

With the built-in high sensitive IR LEDs plus High sensitive , it offers an extraordinary clear view in pitch black darkness. This makes it possible to have covert night-time or underwater surveillance with no need to use an electric lighting.

**\*Extremely reliable Power control**

The model is provided with a power safety technology to prevent it from overheating. It is remarkable that the unit used with 28 LEDs does not generate heat at all. Generally LED cameras generate too much heat and it hurts the life cycle of LED and CCD sensor. It is regarded as natural having no alternative before. This unit provides a clear solution for a trouble-free and powerful Day & Night LED camera.

**\*Complete waterproof mechanism**

The unit is produced and passed for underwater test for 24hrs in order to guaranty of moisture condensation-free on the glass against any harsh weather condition.

### Key Features

**Moisture condensation-free !**

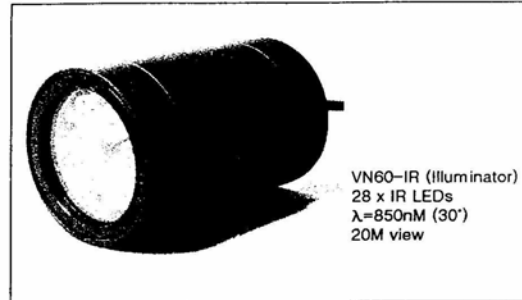
**0 Lux up to 20M distance at night**

**Waterproof**

**No heat !!**

**Extremely reliable operating power regulation built-in**

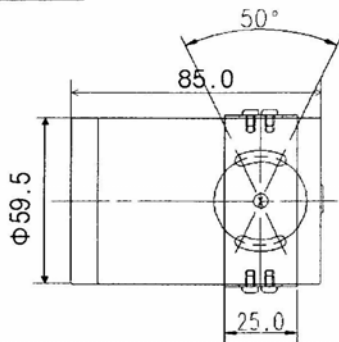
**Automatic LED on/off**



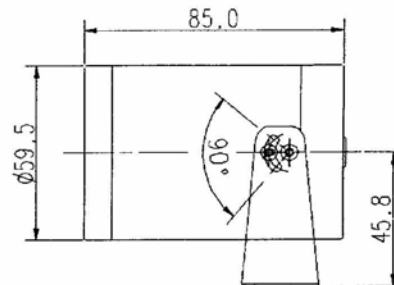
### Specification

MODEL	VN60-IR (Illuminator)
Min. Illumination	LED, 0 (zero) Lux with LED (Day: LED OFF)
LED spectrum	850nm 30 degree visible IR LED x 28 EA as a standard.
IR Beam distance	20M (67ft)
MTBF	20,000 hours
Power source	12V DC/500mA Required
Operation current	200mA~280mA w / regulated 12VDC in
Operating Temperature	14° F~122° F (-20° C~ + 50° C)
Humidity	Within 90% RH
Output Terminal	1.2M (4 ft) DIY cable with ,DC Jack-Male for Power
Measurement (mm)	60(D)x85(L)
Weight(Approx. g)	400

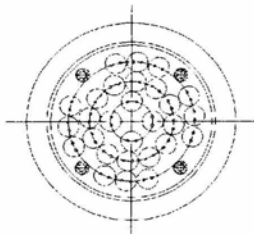
### Dimensions(mm)



[ Bottom View ]

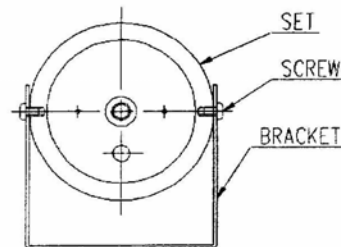


[ Side View ]



IR LED : 28pcs

[ Front View ]



[ Rear View ]