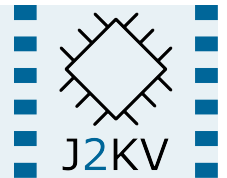


SharpView Auto System

SOLUTION FOR ROAD TRANSPORT, AUTOMOTIVE, BUSES, COACHES, TAXIS



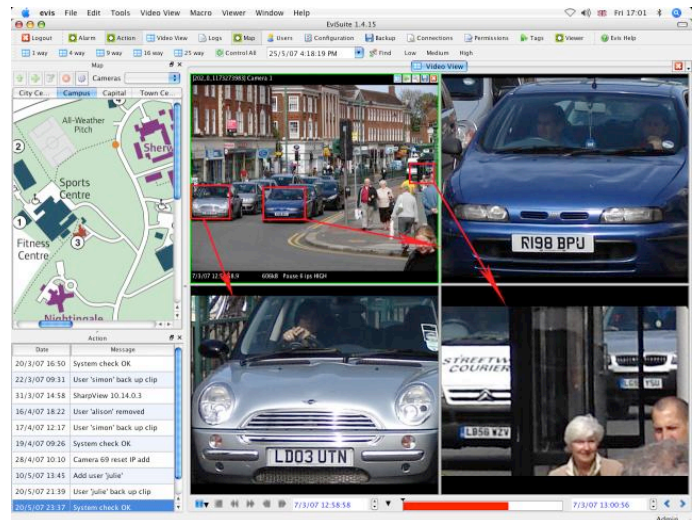
SVR-16NV SharpView Auto NVR

- ▶ Automotive class professional NVR
- ▶ Low power wide DC range supply
- ▶ Records IP video including Multi-MegaPixel, HD CCTV
- ▶ Enterprise class operating system
- ▶ Rugged fan-less enclosure
- ▶ Internal hard disk and USB expansion
- ▶ GPS, GPRS, 3G, HSDPA available

SharpView Auto System includes SVR-16NV, an industrial and automotive grade unit that comes pre-installed with J2K Video's Enterprise class Linux recording software with the most flexible and configurable security management software SVM-PRO SharpView Manager

Ideal for road transport applications where ruggedization and immunity to electrical interference is paramount. Delivers high performance and reliability with ultra low power consumption with automotive grade 9 - 36V DC power input. Record IP video streams from standard resolution, multi-megapixel and HD CCTV cameras.

SharpView systems are scalable providing solutions for unlimited number of cameras, recorders and any security device that requires integration with the CCTV. **GPS, GPRS, 3G, HSDPA** connectivity available on request.



SVM-PRO SharpView Manager

- ▶ Security Management System
- ▶ M-JPEG, MPEG4, H.264, JPEG2000
- ▶ Unique MegaPixel digital-PTZ
- ▶ Alarms, Mapping, Back-up, Macros, Logs
- ▶ Pentaplex operation; Live view, download, searching, exporting, burning CD/DVD
- ▶ Scalable; unlimited number of units
- ▶ Windows and Apple Mac OS X

SVR-16NV

SharpView Auto Network Video Recorder is supplied with 16 inputs enabled for recording video delivered over an IP network. Record a mixture of compression formats; **M-JPEG, JPEG2000, MPEG-2, MPEG-4** and **H.264**. Video is stored on an internal disk or external USB or NAS disks (optional).

Units are industrial grade running J2K Video's SharpView recording software on an Enterprise class Linux operating system. The recording engine exhibits the fastest storage and retrieval performance in the industry.

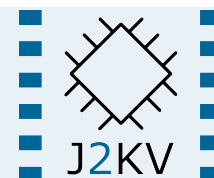
Installed on soldered down flash memory, SharpView Recorder system software is configured so that only minimal write cycles occur in the operating system, thereby ensuring extended life of the flash device.



Video is recorded on automotive class

SharpView Auto System

SOLUTION FOR ROAD TRANSPORT, AUTOMOTIVE, BUSES, COACHES, TAXIS



80GB internal hard disk drive as standard. Video from most industry standard IP cameras, including multi-megapixel, High Definition HD CCTV cameras can be recorded including **Arecont, Axis, IQEye, JVC, Lumenera, Samsung, Sony, UDP** and any **HTTP** and **RTSP** source. Resolution can be set as CIF, 4CIF, D1, HD1080p through to 4008 x 2672. Image rates can be set to 25/30fps PAL/NTSC or any other desired rates delivered by the camera.

Recorders can be configured using any web browser. All system parameters can be set or changed over SSL connection and vital system information can be accessed in the same way.

Video recording parameters are set up either directly at source for IP cameras and encoders or via the configurations options where frame rate, resolution, motion detection, storage times and schedules can be set for each input. Record up to 800 fps full D1 MPEG4.

Video is stored on a proprietary file format that ensures the highest security for recordings as the original stored video can only be played back using SharpView Manager software by authorised users.

The system supports triggered recording, for example motion detection or alarm events with pre-recordings saved at higher quality (resolution and frame rate).

Communications is effective via Fast Ethernet, serial RS232 or USB2.0. Optional wireless connectivity is possible over cellular 3G, HSDPA, WiFi and GPRS. GPS receiver is fitted as standard. Location tracking is provided using SharpView Manager workstation.

Units operate from a wide 9 - 36V DC filtered PSU circuit supply allowing units to be operated directly from vehicle power supply. Units consume a fraction of the power of any rival systems at just 12W total power consumption (with internal hard disk).

The chassis is made from extruded aluminium and heavy duty steel. As with all J2KV products, SharpView Auto NVRs are built to a robust standard without compromise in any of the material used. This coupled with the operating software provides a product of unsurpassed quality, reliability and performance.

FEATURES AT A GLANCE

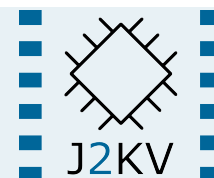
- Ultra low power fan-less system
- Automotive class power supply input
- Extended temperature range -20°C to 60°C (no hard disk)
- Enterprise class Linux operating system
- Operating system on soldered down flash memory
- Records from IP cameras; HTTP and RTSP inc. Arecont, Axis, JVC, IQEye, Lumenera, Samsung, Sony... etc.
- Full frame rate and time lapse recording
- Integrated SSL configuration software for remote access
- Internal hard disk recording or external USB disk
- Pentaplex operation; record, playback, archive, search and stream at the same time
- Single wide filtered 9 - 36V DC power supply
- GPS receiver fitted for location tracking
- Optional wireless connectivity, GPRS, Cellular 3G, HSDPA, WiFi



Typical SharpView Auto System (with optional wireless)

SharpView Auto System

SOLUTION FOR ROAD TRANSPORT, AUTOMOTIVE, BUSES, COACHES, TAXIS



TECHNICAL SPECIFICATIONS

SVR-16NV-080

| | |
|---------------------------|---|
| Operating System Software | Linux |
| Supported Cameras | Arecont, Axis, IQEye, JVC, Lumenera, Mobotix, Panasonic, Samsung, Sony |
| Operating System Storage | SharpView Recorder installed on internal solid state flash memory |
| Storage Capacity | Automotive class 80GB internal hard disk. Optional USB and NAS disk storage |
| Maximum Recording Rate | 32Mbps (equivalent to 800 fps D1) |
| Interfaces | 10/100 Mbps Fast Ethernet LAN, 4 x USB2.0, 2 x RS232/485/422 |
| GPS Receiver | iTrax300 20-ch GPS receiver with position, velocity and time data |
| Operating Temp. Range | -20 to +60°C (no hard disk) 0 to +50°C (with internal disk) |
| Power Supply | Single 9 - 36V DC supply |
| Power Consumption | 12W (typical) |
| Dimensions (D x W x H) | 160 mm x 128 mm x 56 mm |
| Weight | 1.2Kg (max) |

SVM-PRO

SharpView Manager Professional is a feature rich security management software suite that allows users to manage their video with complete integration of any IP devices on the network.

SVM-PRO is available for Win XP, Vista, Windows7 or Apple Mac OS X.

GPS location tracking, Access Control, Fire Alarms, Motion sensors and Intercoms can all be managed alongside the video and more importantly linked to each other using the Connections module that allows local on-site customisation via simple macro scripting. Security personnel can be alerted to specific events and have confidence in their system to carry out automated responses to alarms.

The user interface is configurable and all feature modules (plug-ins) can be repositioned or undocked for display on separate screens.

Unlimited users can use SVM-PRO, the license is limited to each workstation PC.

SVM-PRO includes the following plug-ins:

Video View

Displays cameras with play controls in either 1-way, 4-way or 9-way screen split options. Still image capture (snapshot) as jpeg image file, digital PTZ with preview window, virtual camera views, Tags for marking incidents to allow instant access and review.

Play controls include slow-motion, fast forward and rewind up to x2048 speeds, pause and an interactive timeline marker bar which represents recorded video for each input channel. Recorded video can also be accessed by simple date and time entry for either a selected camera or all cameras in a multi-way display.

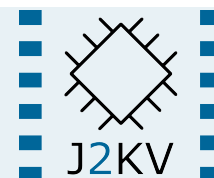
Device Manager

Allows users to see all IP cameras, NVRs, DVRs, and workstations on the system either by classic tree view or by location groups.

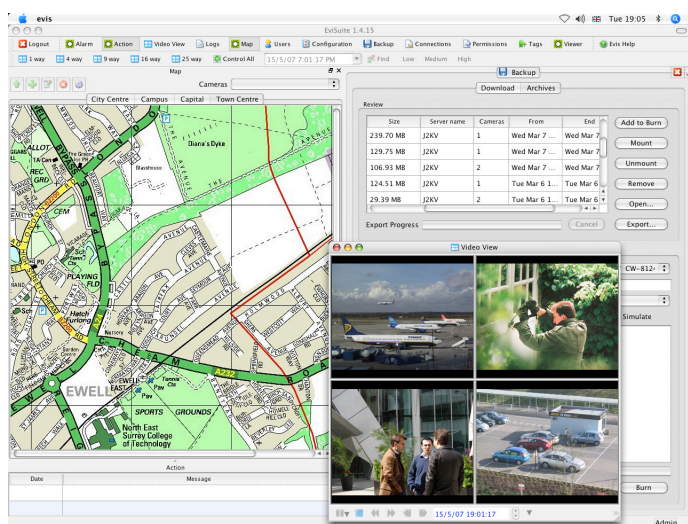
PTZ control (for supported cameras) is provided by use of the mouse or via USB joystick.

SharpView Auto System

SOLUTION FOR ROAD TRANSPORT, AUTOMOTIVE, BUSES, COACHES, TAXIS



Cameras loaded into the Video View by simple drag and drop from the Device Manager or by double clicking the camera after selecting the relevant view.



Typical Screen showing Video View, Back-Up, Mapping

Back-Up Manager

Video clips can be downloaded from the recorder to the local hard disk or any accessible storage device on the network in the original video format.

The downloaded clips can be further exported into common container files such as .avi, .mov and .mp4. Previously downloaded clips can be mounted and viewed alongside live video.

Mapping

Locations of cameras and recorders can be represented with an interactive map or site-plan of the premises. Positions of alarms, access control points, intercoms and motion sensors can be marked out on the map thereby providing the security personnel with a visual guide to where an incident may occur on the site.

The relative PTZ position of each sensor can be preset in the camera or DVR and linked to the device manager so that by simply clicking on a particular part of the map, the associated camera will reposition to that preset coordinate.

Alarm Manager

Alarm Manager 'listens' and logs events by time, date, reference and allows specific actions to follow after an alarm. Alarms could be motion detection from cameras or motion sensors, fire detectors, door entry systems or even monitors from other electronic devices on the network.

Connections

This module allows the user to create specific responses to events in the system via simple scripting or by use of the wizard.

A response could be to start a macro that sends an e-mail alert, plays a sound file and transmits an image to a security guard's workstation following the triggering of an intruder alarm. All plug-in modules are scriptable, thereby the user is able to link and control any devices that are connected to the system.

Data Logs

This plug-in logs events from any plug-in or device driver in the system so the administrator can export the data for future analysis.

Permissions

Permissions allows the user to specify at the plug-in level which functions in the plug-in a user profile can execute.

Users Profile

This module defines the users' access rights. The administrator can control what plug-in modules the user can and cannot access.

J2K Video Limited
Link House
140 The Broadway
Tolworth
Surrey
KT7 6HT
United Kingdom

T: +44 (0) 208 339 6126
E: sales@j2kvideo.com
W: www.j2kvideo.com