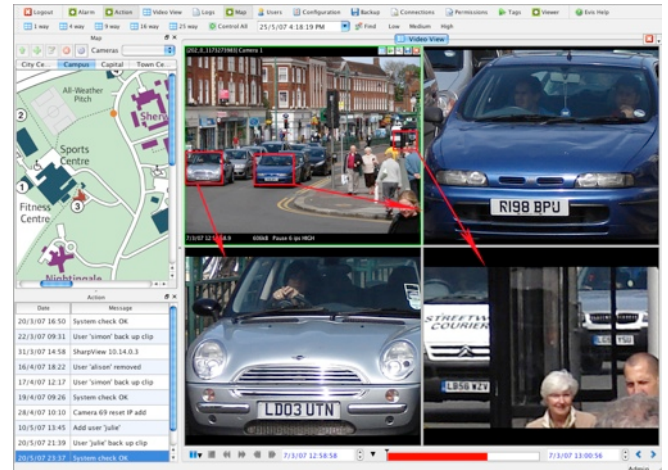


## SharpView Micro - CCTV security for Goods-In-Transit, Cars, Taxis, Rapid Deployment, short term Covert applications



### SharpView Premier SVR-04MI

- ▶ World's smallest, lowest power professional NVR
- ▶ Records megapixel and HD cameras
- ▶ Records analogue\* and IP cameras
- ▶ M-JPEG, MPEG4, H.264, JPEG2000
- ▶ Enterprise class Linux OS
- ▶ Fan-less industrial grade
- ▶ Outstanding thermal properties
- ▶ 1TB internal storage available
- ▶ Scalable recording of unlimited number of cameras to as many required units from multiple sites

SharpView Micro is the perfect solution when power and space is not readily available. Delivering high performance and reliability with the lowest power consumption in the industry. Record IP video streams including HD, multi-megapixel CCTV in this tiny industrial grade unit.

SharpView Micro consists of **SVR-04MI** and **SharpView Manager Professional** combining the world's most powerful video recording engine with EyeLynx's video security management software.

The system is scalable for unlimited numbers of recorders, IP cameras and any security device that requires integration with the CCTV system. Alarms, Intercoms, door entry systems can all be managed using SharpView Manager Professional VMS.

### SharpView Manager Professional



- ▶ Security Management System
- ▶ Unique megapixel digital-PTZ
- ▶ Integrate security systems with plug-ins:
  - Alarms
  - Site-Map
  - Intercoms
  - Action on Event
  - Macros
- ▶ Simultaneous live view, download, export to DVD
- ▶ Cross platform: Linux, Windows, Apple Mac OS X

SharpView Micro is supplied with **5 inputs** enabled, up to **1,000GB** storage and **SharpView Manager Professional VMS**.

Utilising the latest Enterprise class Linux operating system, EyeLynx's SharpView recording engine exhibits the fastest storage and retrieval performance in the industry.

**SVR-04MI** records digital video for all compression formats including; **H.264, MPEG4, M-JPEG, and JPEG2000** from most standard IP, megapixel and HD CCTV cameras. Video from **Arecont, Axis, Hikvision, IQEye, JVC, Lumenera, Panasonic, Pelco, Samsung, Sanyo, Sony, UDP, X-Vision**, any HTTP or RTSP stream can be recorded.

\* Record analogue cameras via IVE (see below)

## FEATURES AT A GLANCE

- **Ultra low power fan-less system**
- **Palm sized industrial grade chassis**
- **Enterprise class Linux operating system**
- **Records from IP cameras; HTTP and RTSP inc. Arecont, Axis, JVC, IQEye, Lumenera, Panasonic, Samsung, Sony... etc.**
- **Full frame rate and time lapse recording**
- **Integrated SSL configuration software for remote access**
- **Internal hard disk recording or external USB disk**
- **Pentaplex operation; record, playback, archive, search and stream at the same time**
- **Single 5V DC power supply**
- **Gigabit Ethernet LAN port**

**SVR-04MI** can be configured using any web browser including hand held devices connected to the unit. All system parameters can be set or changed over SSL connection and vital system information can be accessed in the same way. Video recording parameters are set up via web-browser; frame rate, resolution, motion detection, storage times and schedules can be set.

Sources can be a mixture of PAL/NTSC, IP including High Definition and megapixel cameras. Resolution can be selected by the users; **CIF, VGA, 4CIF, D1, 720p, 1080p, 2048 x 1536, 2560 x 1920** through to **4008 x 2672**. Recording frame rates can be set to any rate supported by the cameras. Analogue cameras can be recorded using industry standard encoders.

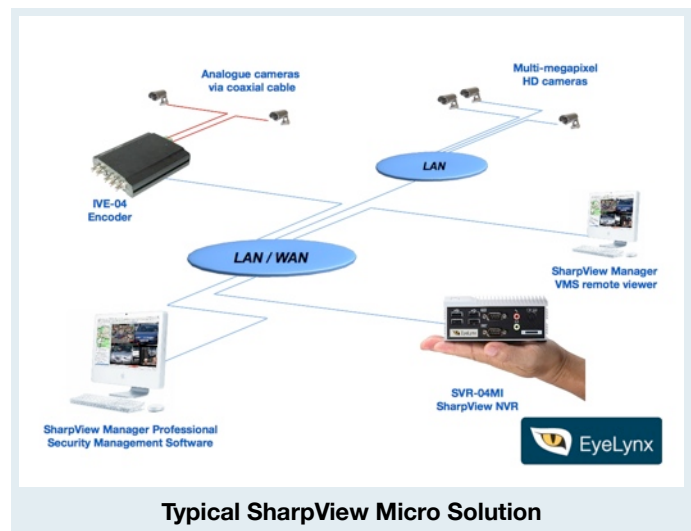
Maximum recording rate for SVR-04MI is 25Mbps or 120 fps. 5 full HD1080p cameras each running at 30 fps can be recorded.

**1,000GB** of internal storage is available. The chassis features thermal certification of Intel Dual core and Quad core CEB compliance and exhibits excellent thermal performance.

As with all EyeLynx products, the SVR-04MI is industrial grade, built to a robust standard without compromise in any of the material used. This coupled with the operating software provides a product of unsurpassed quality, reliability and performance.

## TECHNICAL SPECIFICATIONS SVR-04MI

Operating System Software	Enterprise class Linux
Inputs	5 inputs of any resolution
Supported Cameras	Arecont Vision, Axis, IQEye, JVC, Lumenera, Panasonic, Pelco, Samsung, Sanyo, Sony, UDP, X-Vision, HTTP, RTSP cameras and encoders
Operating System Storage	Internal Hard disk drive or Solid State Disk-On-Module (option)
Storage Capacity	500GB or 1,000GB internal hard disk. Optional USB disk storage
Maximum Recording Rate	25Mbps or 120fps
Interfaces	1000 Mbps (Gigabit) Ethernet LAN, 4 x USB2.0, RS232
Operating Temp. Range	0 to +50 degrees C
Power Supply	Single 5V DC supply
Power Consumption	12W (typical)
Dimensions (D x W x H)	96 mm x 132 mm x 48 mm
Weight	0.6Kg (max)

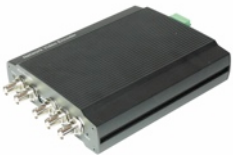


## Intelligent Video Encoders IVE-XX

**Intelligent Video Encoders** are available as single channel, quad channel module or rack mount version with 4-channel blade cards.

Using **IVE-XX** encoders is the easiest way to migrate an analogue system with existing PAL/NTSC cameras to SharpView digital IP CCTV platform. **IVE-XX** encoders convert the analogue signal to digital M-JPEG, MPEG4 or H.264 compression with D1 resolution and full frame rates 25/30 fps PAL/NTSC on all channels. **IVE-XX** encoders include 4/4 digital I/O and RS-232, RS-485 for every 4-channel module or blade card. PTZ protocols for all major manufacturers is supported. are provided. Refer to datasheets for detailed specifications.

**IVE-04; 4 channel encoder**



**IVE-12; 12 channel rack mountable encoder**



**IVE-40; 40 channel rack mountable encoder**

### Video Content Analytics

Video intelligence or 'video content analytics' is carried out by the powerful and intuitive tracking engine built into each IVE-XX. This video analytics software algorithm provides alerts for any scene changes meeting the users pre-defined conditions, providing a highly reliable, high performance capability that results in the lowest false alarm rates and maintains ease of use for operator control.



**Abandoned object in car park**



**Intruder alert at perimeter fence**

### Video Intelligence - Premium

High Performance	Lowest false alarm rate algorithm
Ease of use	Intuitive configuration and set-up
Detection Zones	Multi-segment polygon and lines
On-Screen display	Real-Time display of tracking / events

### Video Intelligence - Professional (optional)

Detection Behaviour	Direction, stopping, loitering, left object, removed object
3D Behaviour	Perspective corrected filters for size and speed
Statistics	Counting functions
Image Stabilisation	Removes camera shake
Tracking	Auto PTZ tracking



## SharpView Manager Professional

Feature rich security management software that allows users to manage their CCTV with complete integration of other security devices. Access Control, Fire Alarms, Motion sensors and Intercoms can all be managed alongside CCTV and more importantly linked to each other using the Connections module that allows local on-site customisation via simple macro scripting. Security personnel can be alerted to specific events and have confidence in their system to carry out automated responses to alarms. The user interface is configurable and all feature modules (plug-ins) can be repositioned or undocked for multiple screens.

Unlimited number of users can use SharpView Manager on Windows or Apple Mac OS X.

### Video View

Displays cameras with play controls in either 1, 4, 9, 16, 25 or 36-way screen split options. Monitor feature provides extra Video View for up to a total of 72-ways. Save images (snapshot) as jpeg, instant print, digital PTZ with preview window, create virtual cameras, mark incidents with Tags for instant access and review.

Play controls include slow-motion, x2048 fast forward and rewind speeds, pause and an interactive timeline marker bar which represents recorded video. Recordings can also be accessed by simple date and time entry for either a selected camera or all cameras in a multi-way.

### Device Manager

Allows users to see all IP cameras, NVRs, DVRs, and workstations on the system either by classic tree view or by location groups. PTZ control for supported cameras is provided by use of the mouse or via USB joystick.

### Back-Up Manager

Video clips can be downloaded from the recorder to the local hard disk or to any storage device on the network in the original video format. Downloaded clips can be further exported into .avi or .mov. Previously downloaded clips can be mounted and viewed alongside the live video.

### Mapping

Cameras can be represented on an interactive map of the premises. Positions of alarms, access control points, intercoms and motion sensors can be marked out on the map.

The relative PTZ position of each sensor can be preset in the camera or DVR and linked to the device manager so that by simply clicking on a particular part of the map, the associated camera will reposition to that preset coordinate.

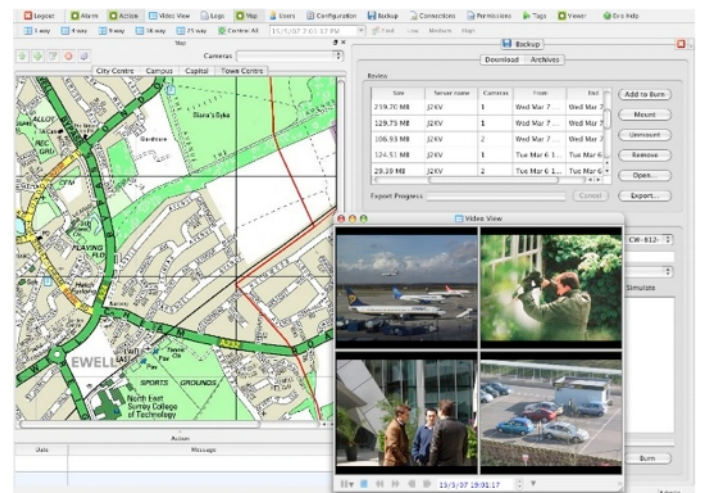
### Alarm Manager

Alarm Manager 'listens' and logs events by time, date, reference and allows specific actions to follow after an alarm. Alarms could be video intelligence alerts, motion detection from cameras or PIR motion sensors, fire detectors, door entry systems or even monitors from other electronic devices on the network.

### Connections

This module allows the user to create specific responses to triggers received by the system via simple scripting or by use of the wizard. This powerful module enables the user to design the security based on 'action on event' specified criteria.

An action could be to start a macro that sends an e-mail alert, plays a sound file and transmits an image to a security guard's workstation following the triggering of an intruder alarm. All plug-in modules are scriptable within Connections, thereby the user is able to link and control any devices that are connected to the system.



Typical Screen showing Video View, Back-Up, Mapping

### Data Logs

This plug-in logs events from any plug-in or device driver in the system so the administrator can export the data for future analysis.

### Users Profile

This module defines the users' access rights. The administrator can control which plug-in modules the user can and cannot access.

### Permissions

Permissions allows the user to specify at the plug-in level which functions in the plug-in a user profile can execute.

**Distributed by:**

**EyeLynx Limited**  
Trident Court  
One Oakcroft Road  
Chessington  
Surrey  
KT9 1RH, UK  
[www.eyelyn timer.com](http://www.eyelyn timer.com)

