

Full HD(1920x1080/60p) AF 18x Camera Module

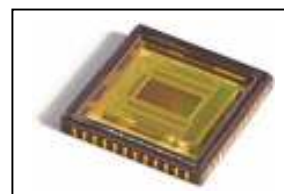


Product Features

- Full HD (1920x1080) AF18x Zoom camera module**
- Full HD(1920 x 1080/60p, 50p, 30p, 25p and 720/60p)available**
- True D/N embedded**
- Newly-developed “Wide Dynamic Range”embedded**
- 1.5G/3G Serial Conversion. DVI, TV composite(NTSC/PAL) embedded**
- Power-over Coaxial (PoC) available(1.5G)**
- AF18x Full HD zoom for industrial usage**

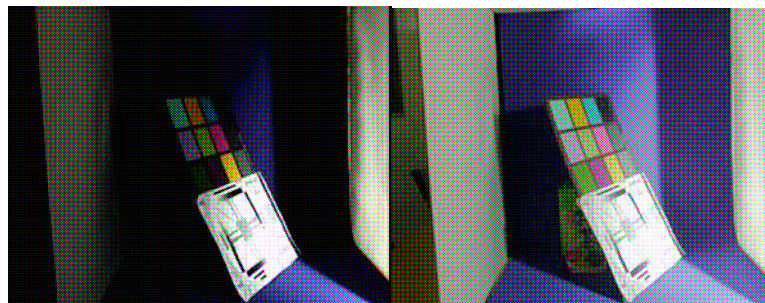
SNR 56dB High-End CMOS and 1920x1080/60p available

This CMOS imager is next-generation, 12-bit imaging System on-Chip (iSoC) technology that offers the highest HDTV image quality at the maximum video rate, lowest power, and lowest random noise currently available. This PHD-01X enables 1080/60p, 50p,



Newly-Developed “Wide Dynamic Range”

Covering “Over-Exposure and under-Exposure at high dynamic range scene”.



Multiple Interface

Enable to use conventional coaxial cable without new power and infrastructure installation by using 1.5G/3G Serial Conversion interface. DVI, TV composite (NTSC/PAL) available

Power-Over –Coaxial (PoC) available (1.5G serial version only)

Once the equipment connecting with the PHD-01X also has PoC function, the PHD-01X needs no power to be supplied. Easy to install PHD-01X in installation site.

High Sensitivity at low light

Achieving 0.2 lux (Mono/33ms), 0.05 lux (Mono/500ms)

* 0.2 lux monochrome 1/30sec(33ms) IR cut off

* 0.05 lux monochrome 1/2sec(500ms) IR cut off

General Specification

Imager 1/3" RGB Bayer CMOS
Effective Pixels Approx 2 megapixel
Lens 1/3" f=4.7-84.6mm

F1.8

Digital zoom 12x (Max 216x)

FOV (H) 55° x 3.2°

Output format 1920x1080/60,50,30,25(p/i)

720p available, NTSC/PAL

Minimum illumination 1lux (Color/33ms)

0.2lux (Mono/33ms)

0.05lux (Mono/500ms)

WDR 80db

SNR 56Db

Interface 1.5G/3G Serial

Conversion (+TV)

or DVI(+TV)

Shutter speed 2 ~ 1/10,000sec

White Balance Auto/Manual/Outdoor/One-Push

Sync Internal/External (Master-Clock & Sync)

AE Auto/Manual/Shutter-P/Iris –P/Spot

Flip/Reverse Yes

Privacy Masking 8 points

Operating temp 0-45C degree

Power 6.5VDC-12VDC

Weight Approx 250g (w. Chassis)

Dimension 59(W) x 64.3(W) x 118.8(L)(w.Chassis)