

384x288 resolution and high performance IR camera
for universal industrial applications

HotFind-L



Duo-vision technology

With the Duo-vision technology, HOTFIND-L series can overlap the visual image with the thermal image, making it easier to locate the problem. There are four display modes, users can choose their preference.



Bluetooth

Users can add voice annotation to the thermal image via Bluetooth. The voice annotation can be saved with the same thermal image and can be played back with the analysis software, making it easier for post analysis.

USB real time thermal video recording

The thermal data can be transferred through USB2.0 interface to PC in real time by the software for analysis and reporting.

Tripod fixer (optional)

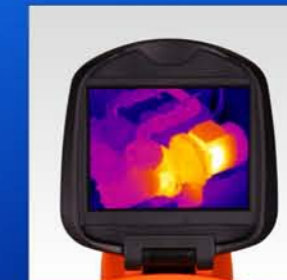
HOTFIND-L series can be attached on to a tripod using a tripod adapter. With this feature, the HOTFIND-L series can be used for monitoring purpose. Together with the A/C adapter (optional), the users can use the HOTFIND-L series for long time operation.

The tripod adapter can also be used on all the HOTFIND series of infrared cameras.



3.5 inch flip-able LCD

Users can adjust the angle of the LCD for the best observation result. Flip-able design can also provide best protection to the LCD while the camera is not in use.



High frame rate in real time

HOTFIND-L series adopts NTSC(60Hz) or PAL(50Hz) composite video output. The thermal image is taken in real time, and no lagging will be found, which guarantees a complete and vivid thermal image, most importantly, no single detail or problem will be overlooked.

Extendable temperature range

Objects of different temperatures require corresponding temperature ranged infrared cameras. HOTFIND-L series has four temperature ranges. It can be extended from standard +250°C to +1500°C, which means the HOTFIND-L series can be widely used in various applications.

Four Spot analysis, auto tracking

HOTFIND-L series has four movable spots, with which you can measure four different points in one thermal image simultaneously, making it easier for users' comparison. Auto tracking can find the spot with the highest or lowest temperature offering clear indication of the spot.

Various optional lenses

Flexible design of the lens means the HOTFIND-L series can adopt various optional lenses with different FOV. All lenses are field replaceable. With such optional lenses, HOTFIND-L series can provide users with different thermal image effects at the same distance and position.



Type	HotFind-LN	HotFind-LT	HotFind-LG
Image performance			
FOV/Min.focus distance	24° x18°/0.1m	24° x18°/0.1m	24° x18°/0.1m
Spatial resolution	1.3 mrad	1.3 mrad	1.3 mrad
Thermal sensitivity	≤0.05°C@30°C	≤0.05°C@30°C	≤0.05°C@30°C
Detector type	UFPA	UFPA	UFPA
Resolution	384x288	384x288	384x288
Spectral range	8-14um	8-14um	8-14um
Focus	Manual	Manual	Manual
Image presentation			
Image mode	IR Only	IR/CCD/Duo-vision	IR/CCD/Duo-vision
LCD Display	3.5" TFT screen	3.5" TFT screen	3.5" TFT screen
Digital camera	No	640 x 480 full color	640 x 480 full color
Viewfinder	N/A	N/A	N/A
Video output	NTSC (60Hz) or PAL (50Hz) composite video	NTSC (60Hz) or PAL (50Hz) composite video	NTSC (60Hz) or PAL (50Hz) composite video
Temperature			
Measurement range	-20°C ~ +250°C , up to +1500°C (optional)	-20°C ~ +250°C , up to +1500°C (optional)	-20°C ~ +250°C , up to +1500°C (optional)
Accuracy	±2°C,±2% of readings	±2°C,±2% of readings	±2°C,±2% of readings
Measurement mode	1 movable spot, auto hot/cold spot	4 movable spots, auto hot/cold spot, isotherm	spot, profile, 5 area boxes, isotherm
Correction	Emissivity, ambient temperature, distance, relative humidity	Emissivity, ambient temperature, distance, relative humidity	Emissivity, ambient temperature, distance, relative humidity
Delta T	Yes	Yes	Yes
Alarm	Yes	Yes	Yes
Image storage			

Type	2GB removable MiniSD card	2GB removable MiniSD card	2GB removable MiniSD card
File format- Thermal	.SAT	.SAT	.SAT
File format- Visual	.CCD	.CCD	.CCD
Thermal video record	N/A	N/A	N/A
Annotation	No	No	Yes
Battery system			
Working voltage	DC 8V-11V	DC 8V-11V	DC 8V-11V
Battery operating time	2.5 hours	2.5 hours	2.5 hours
Environment			
Operating temperature range	-20°C to +50°C	-20°C to +50°C	-20°C to +50°C
	-40°C to +70°C	-40°C to +70°C	-40°C to +70°C
Humidity	10% to 95%, non-condensing	10% to 95%, non-condensing	10% to 95%, non-condensing
Encapsulation	IP54	IP54	IP54
Shock (operational)	25G	25G	25G
Vibration (operational)	2G	2G	2G
Physical characteristic			
Weight	Less than 600g	Less than 600g	Less than 600g
Size	215 mm ×80mm ×219mm	215 mm ×80mm ×219mm	215 mm ×80mm ×219mm
Tripod mounting	1/4" _20	1/4" _20	1/4" _20
Other			
Illuminator	No	Yes	Yes
Laser pointer	No	Yes	Yes
USB2.0 transfer realtime thermal data	No	No	Yes
Bluetooth interface/GPS/Wifi	No	No	Yes
Available optional lenses	12°, 48°	12°, 48°	12°, 48°